



Lee Jung Eun



# Biography

---

E-mail: leeje0719@hanmail.net



## Lee Jung Eun

### Academic Background

1993 Collage of fine arts Hong-Ik University.  
Painting. BFA.

1995 Graduate school of fine arts Hong-Ik  
University. Painting. MFA.

1998 Graduate school of Tokyo National  
University of Fine Arts and Music (Mural  
Painting Research course). Japan.

### Solo Exhibitions

- 2016 <Dalha Noppigom> Gallery Art Factory. Seoul
- 2015 <Eyes Chasing Thought> Gahoedong 60. Seoul
- 2014 <The Sprouting Cosmos> Gallery Art Factory. heiry
- 2012 <The depth of the BLUE> Gallery b'ONE. Seoul
- 2011 <Blooming ii> Gallery b'ONE. Seoul
- 2010 <Blooming i> Gallery Q. Tokyo
- 2009 <My beautiful garden> Gallery Q. Tokyo
- 2006 <Wonderland> Gana Art Space. Seoul
- 2001 Dukwon Gallery. Seoul
- 1998 Gallery Yamaguchi. Tokyo
- 1995 Chungnam Art Gallery. Seoul



## Group Exhibitions

- 2014 KIAF2014 (Coex) Deagu Artfair(Deagu.Exco),Art Adition2014 (Hangaram Museum  
2013 Art Kaohsiung 2013.(Kaohsiung) Doors Art Fair(Seoul) Lexus Art show (Seoul. Busan)  
2012 ART SHOW BUSAN 2012 (Baxco. Busan)  
2010 Contemporary Art Collection (Matsuyama Mitsukoshi Gallery. Matsuyama)  
The Heartwarming (Gallery Q. Tokyo)  
2009 The Heartwarming (Gallery Q. Tokyo)  
2006 New Flux in Paris 2006 (Mille Plateaux Gallery. paris)  
21c-Exhibition of Tomorrow (Culture Art Hall. Ansan)  
2003 Temperature of the Outer layer (Gallery Verger. Tokyo)  
The color in April (Gallery Mulsory. Ulsan )  
Verger (Gallery Verger. Tokyo)  
1998 Jues noel (Gallery Chika. Tokyo)  
1997 Exhibition of Creation  
(Tokyo National University of Fine Arts and Music. Tokyo)  
1995 Middle Zone –A Repairman of Culture (Insa Gallery. Seoul)  
Seoul Contemporary Art fair (Fine Art Center. Seoul)  
Korea Grand Art Fair (National Museum of Contemporary Art. Seoul)  
1994 C517 (Insa Gallery. Seoul)  
Seoul Contemporary Art fair (Fine Art Center. Seoul)  
Korea Grand Art Fair (National Museum of Contemporary Art. Seoul)  
Exhibition of Recommendation-Chung.Mi.Yeon (Beksang Gallery. Seoul)

## Collaboration Work

- 2017 <clock of time traveler> Seoul284/ Performance Grup153  
2015 <Change of season>National Theater of Korea / Performance Grup153  
(Coex) Deagu Artfair(Deagu.Exco),Art Adition2014 (Hangaram Museum

## Artist Statement



I kept thinking

Everything in this world is like a web, like veins, entangled in a strange, inexplicable structure. Phenomena that appear above the surface hiding their true nature, having their essence vanish repeatedly.

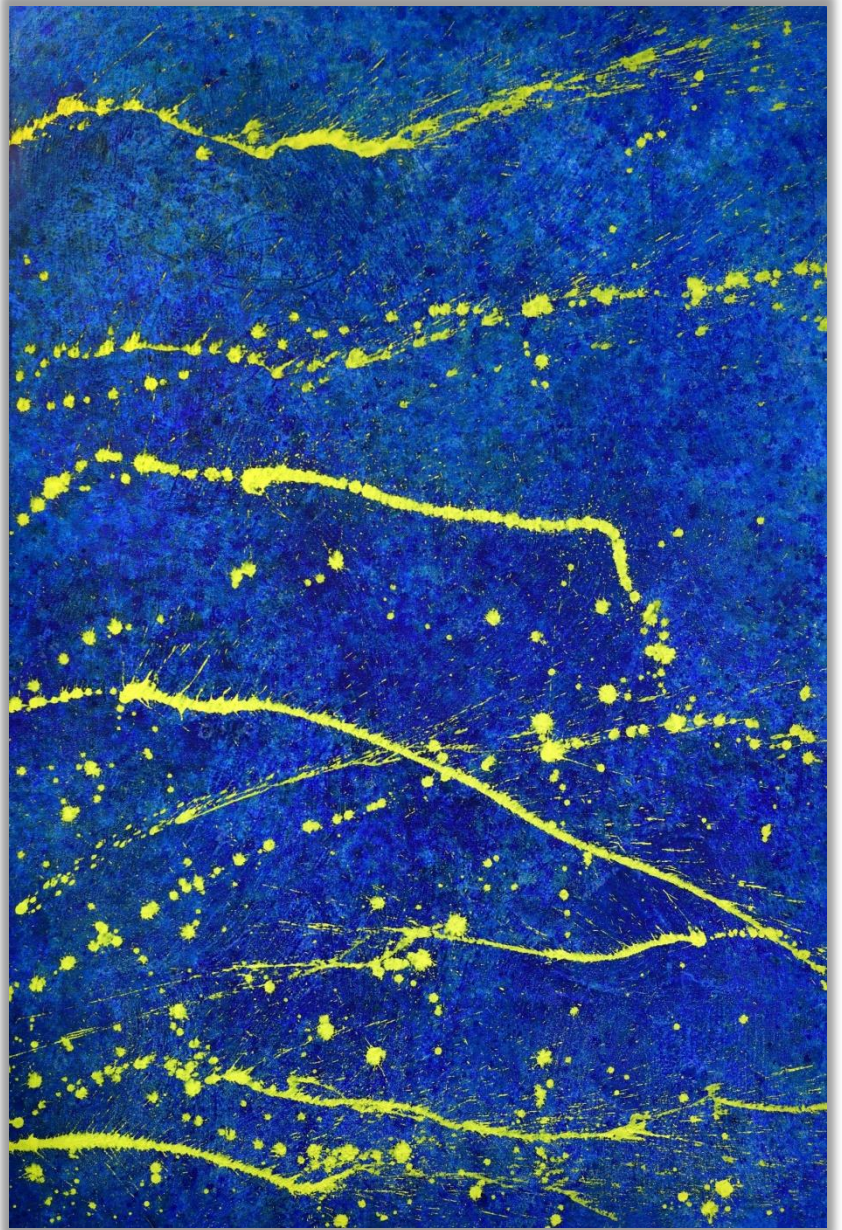
By controlling so-called thoughts in mind, mixing beautiful colors and odd shapes with 'a sense-per se', and painting them out, I found myself submerged into the bottom of the Proto-world.

Up from somewhere, the inside of sight, The two-dimensional landscape, in seeing it, widens infinitely. Thereafter, another world appears - truth and illusion.

My work reaches the painting of symbol and landscape like a brain murmuring before meaning emerges. An encounter with the power of life energy, with having sensation, discarding the original meaning of the code.



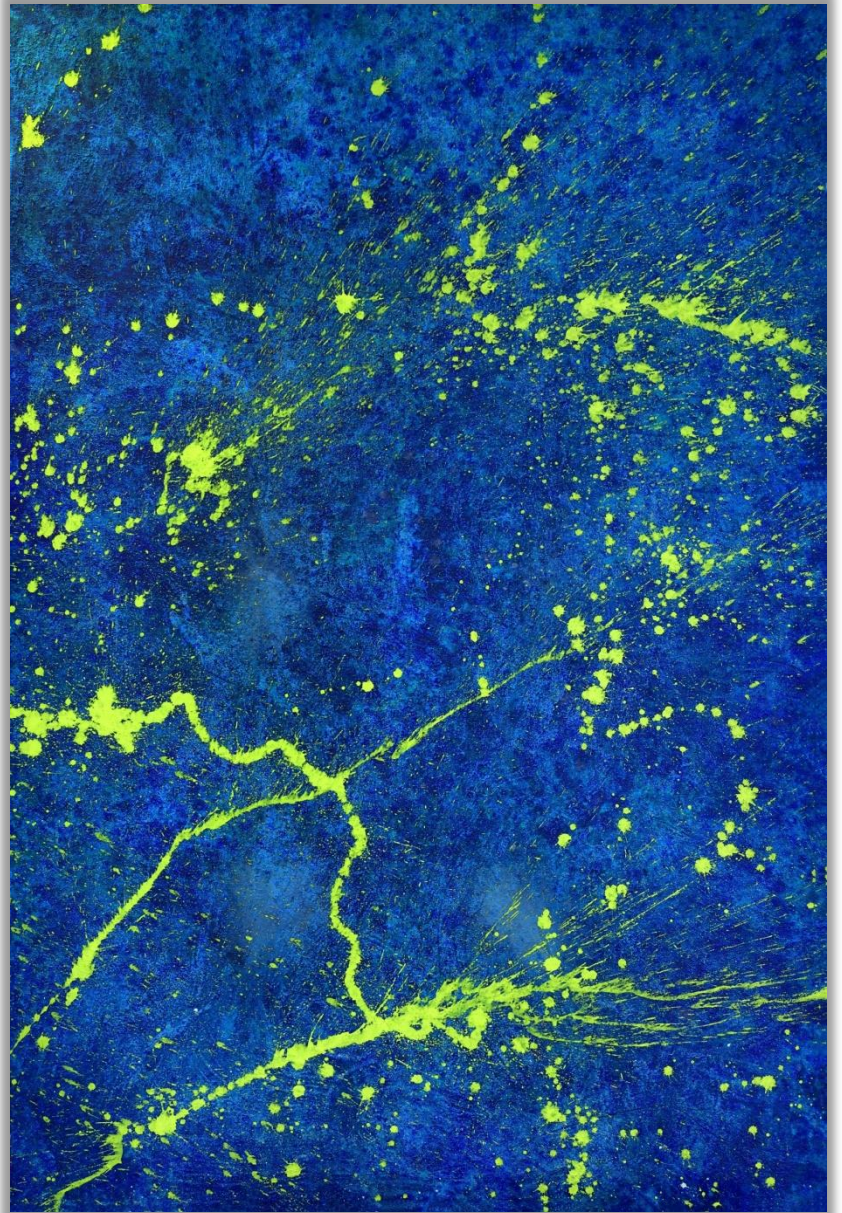
## Works



**eternal space- Blue 2**

**mixed media on canvas . 130 × 194 . 2019**

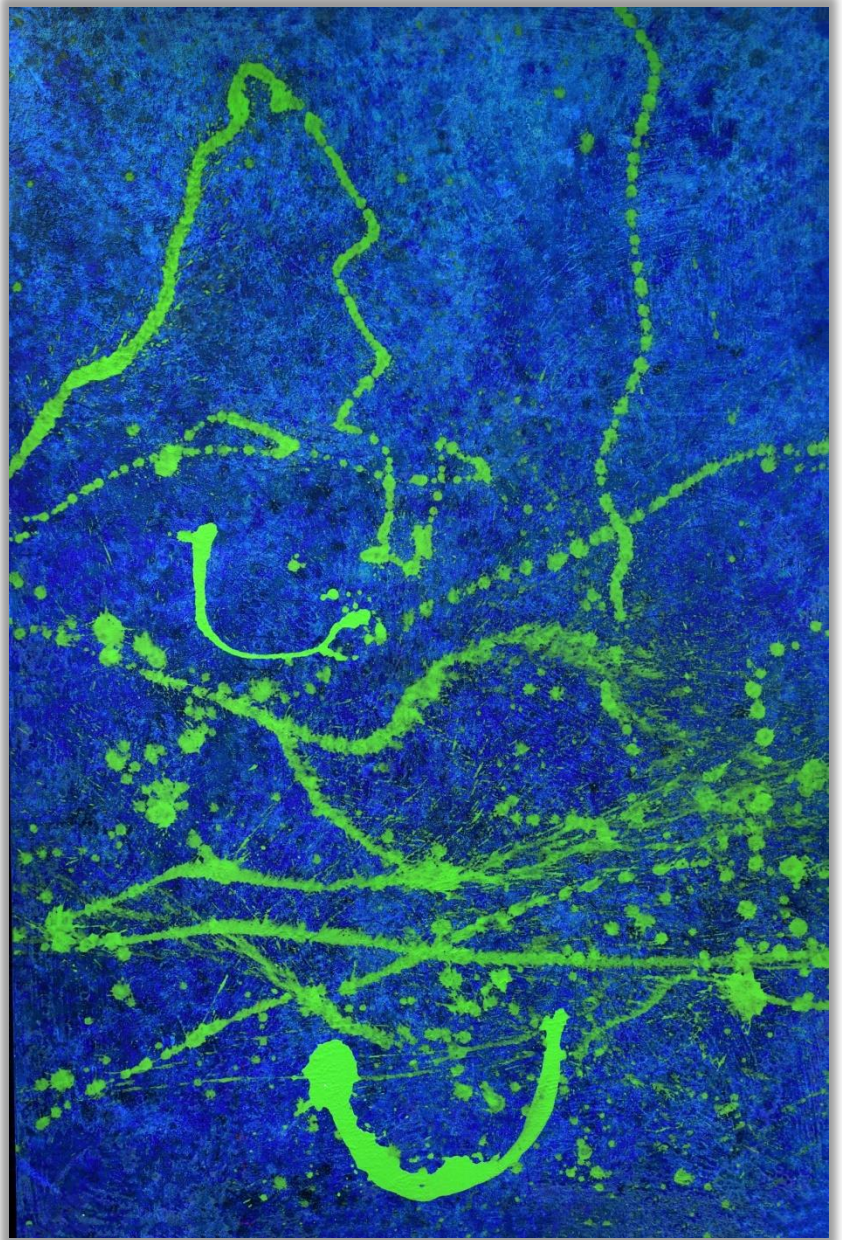




**eternal space- Blue1**

**mixed media on canvas . 130 × 194 . 2019**





**The blue**

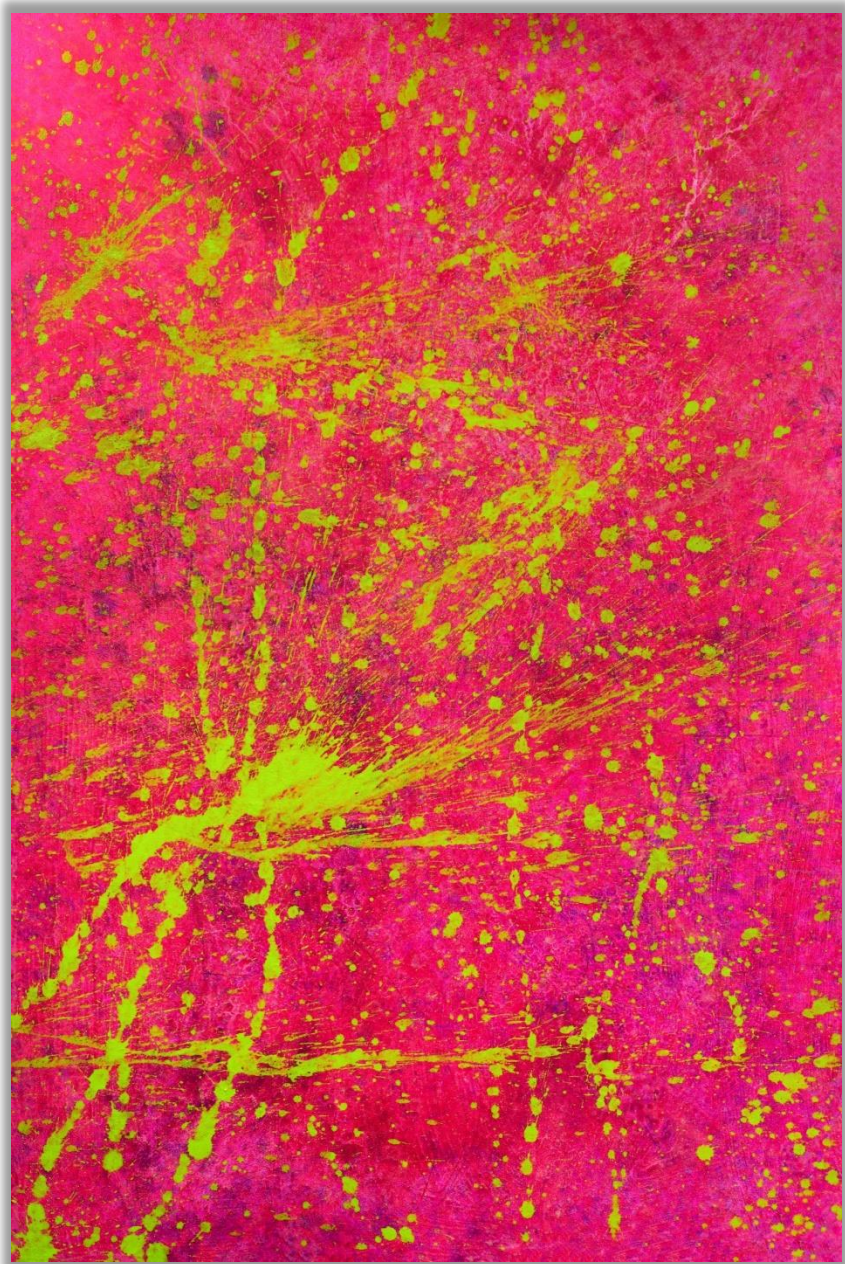
**mixed media on canvas . 130×194 . 2019**



**Kind of pink 3**

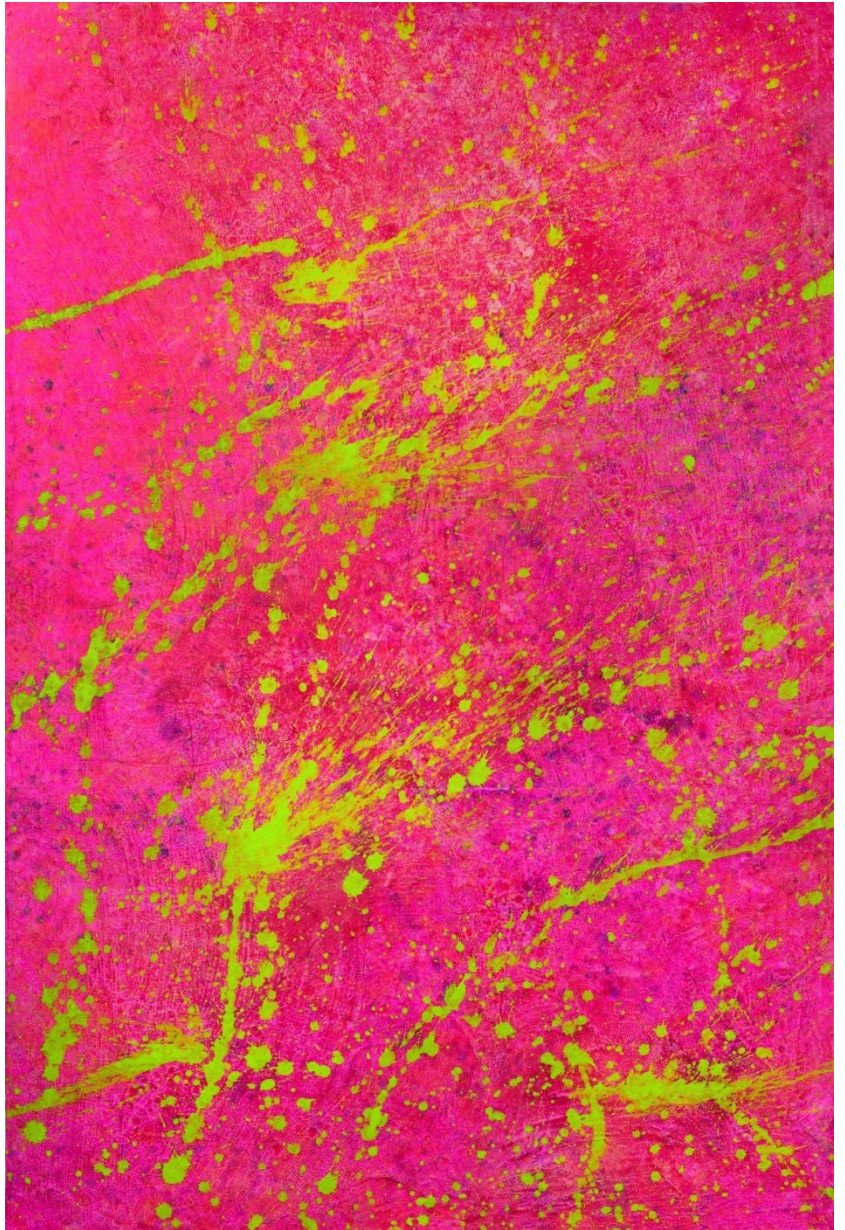
**mixed media on canvas . 130×194 . 2019**





**Kind of pink 2**

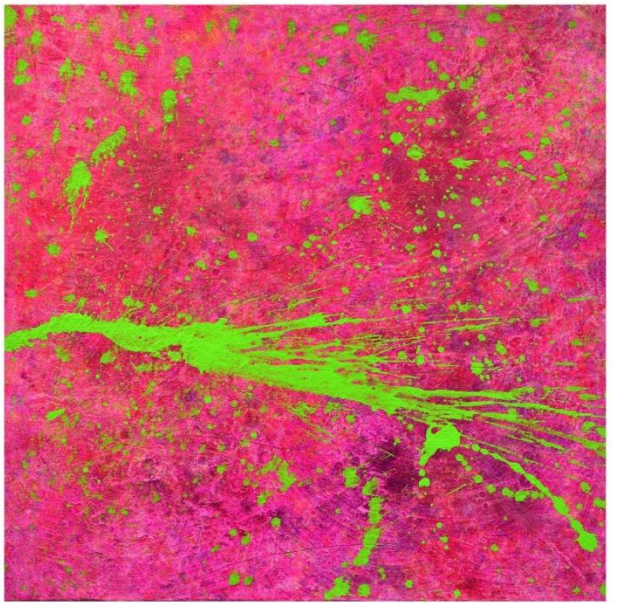
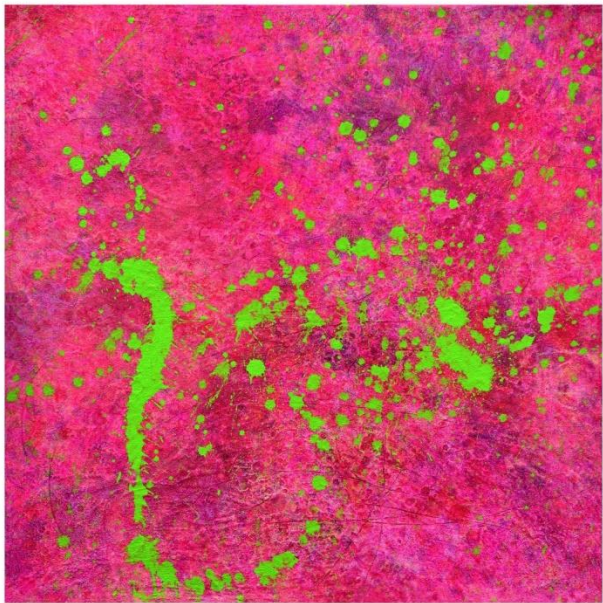
**mixed media on canvas . 130×194 . 2019**



**Kind of pink1**

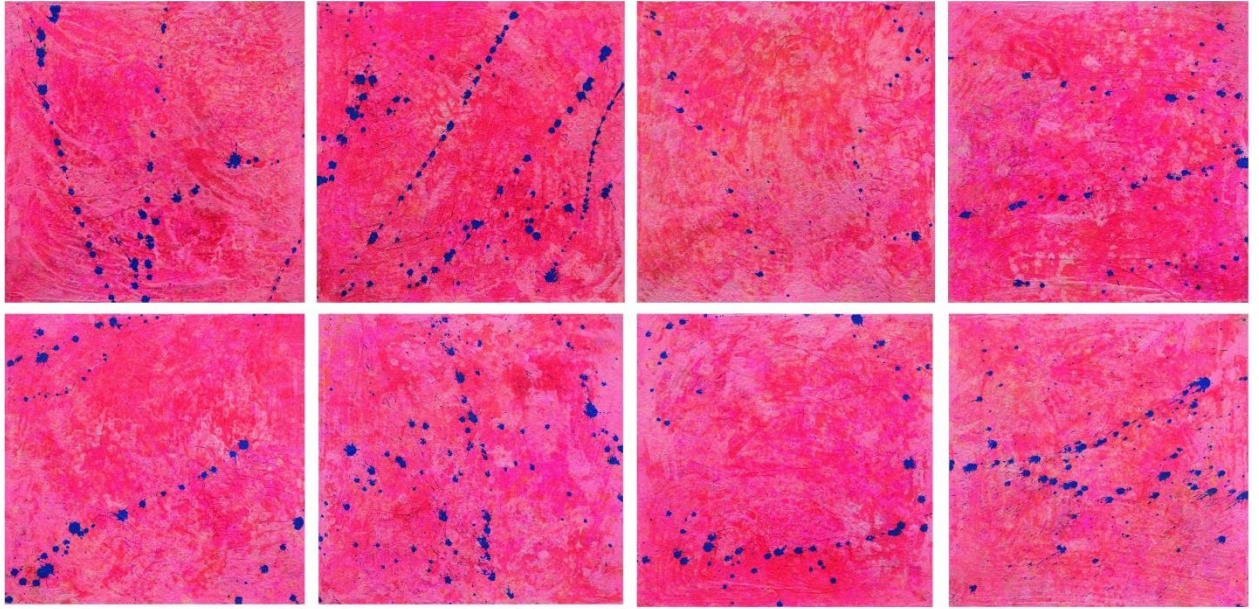
**mixed media on canvas . 130×194 . 2019**





**Impromptu-eternal moment**  
**mixed media on canvas . 182×182 . 2019**





Variation of pink –space  
mixed media on canvas . 61 × 61 × 10 series . 2019